

Ex d, Intrinsically Safe (Ex ia), Weatherproof

AVAILABLE IN
STAINLESS STEEL



Features

- Zone 0, Zone 1 and Zone 2 use*.
- Ex d IIC T5/T6 or Ex ia IIC T4.
- ATEX approved, Ex II 1G (Ex ia) Ex II 2GD (Ex d).
- BASEEFA certified.
- UL listed for USA and Canada (PB only), Class I, Div 1, Groups C & D.
- ULC certified for Class I, Zone 1 Groups C & D.
- CSA certified.
- IECEx certified Gb, Db.
- CUTR certified.
- Chinese (CQST) certified.
- Brazilian (Inmetro) certified.
- SIL 2 certified. (SM87 PB only).
- IP66 and IP67.
- Certified temperature: -55°C to +70°C*.
- Stainless steel or marine grade alloy.
- Robust yet lightweight.
- Easy to maintain.

*Model dependent.

Introduction

These manual fire alarm, emergency shutdown break-glass and pushbutton units have been designed for the most arduous environmental conditions. The units are both easy to install and maintain. Intrinsically safe Ex ia and flameproof Ex d versions of each model are available.

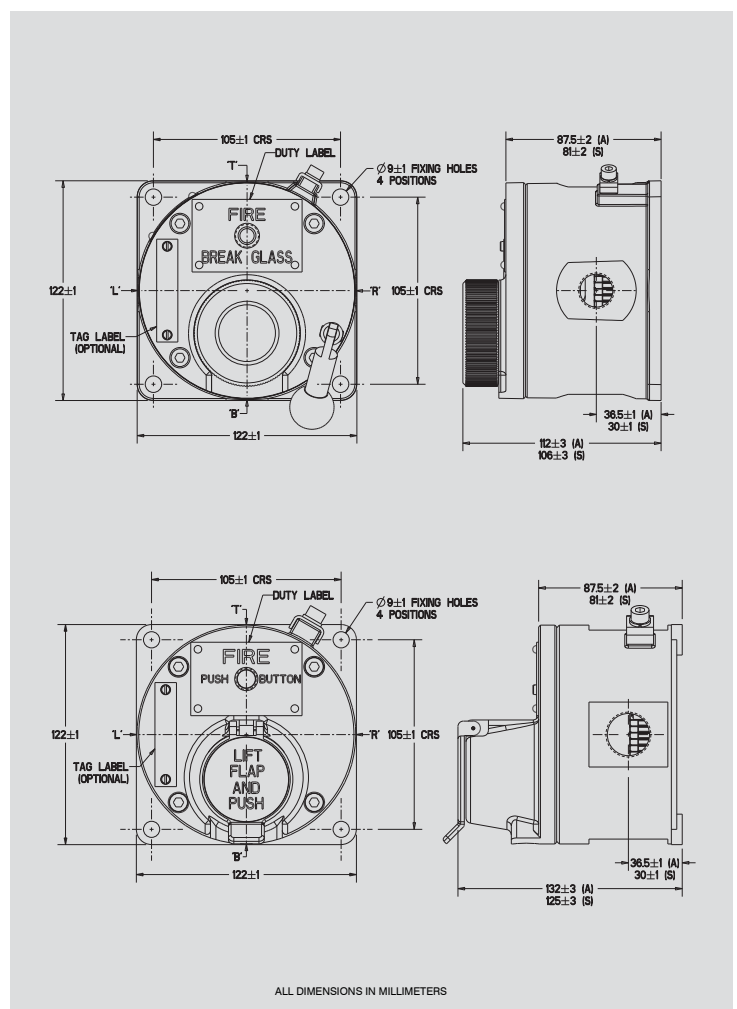
A choice of either stainless steel or alloy makes the range suitable for either the offshore or onshore industries. Stainless steel, one of the most durable materials available on the market, is both hard wearing and corrosion resistant, increasing the life of products in harsh environments and therefore reducing maintenance costs.

Stainless steel, one of the most durable materials available on the market, is both hard wearing and corrosion resistant, increasing the life of products in harsh environments and therefore reducing maintenance costs.



Certification and Specification

ATEX Ex d:	Cert. no. Baseefa03ATEX0075. ATEX Approved Ex II 2GD. Certified to: EN60079-0, EN60079-1, EN60079-31. Ex d IIC T5/T6 Gb, Ex tb IIIC T85°C/T100°C Db. IP66/IP67.
ATEX Ex ia:	Cert. no. Baseefa 02ATEX0152X. ATEX Approved Ex II 1G. Certified to: EN60079-0, EN60079-11, EN60079-26. Ex ia IIC T4 Ga.
IECEx Ex d:	Cert. no. IECEx BAS 09.0060. Certified to: EN60079-0, EN60079-1, EN60079-31. Ex d IIC T5/T6 Gb, Ex tb IIIC T85°C/T100°C Db. IP66/IP67.
IECEx Ex ia:	Cert. no. IECEx BAS 10.0033X. Certified to: IEC60079-0, IEC60079-11, IEC60079-26. Ex ia IIC T4 Ga.
UL:	Listing no. E186629. UL listed to Class 1, Div 1. Groups C & D. (SM87PBL).
ULC:	Cert. no. 20091023-E320282. ULC certified for Class I, Zone 1 Groups C & D.
CSA Ex d:	Class 1, Div 1 & 2. Group D.
CSA Ex ia:	Class 1, Div 1 & 2. Groups A-D.
CUTR Ex d: ‡	1Ex d IIC T5/T6 Gb, Ex tb IIIC T85°C/T100°C Db. IP66/IP67. Russian Fire Approved.
CUTR Ex ia: ‡	0Ex ia IIC T4 Ga. Russian Fire Approved.
Inmetro Ex d:	Ex d IIC T5/T6 Gb.
Inmetro Ex ia:	Ex ia IIC T4 Ga.
CQST Exd:	Exd IICT85°C/T100°C.
CQST Exia:	Exia IIC T4.
SIL:	PB only - SIL2 Certification to IEC61508. Cert. No. FSP1404
Material:	Grade 316 ANC4B Stainless Steel or LM 25 TF Marine Grade Alloy.
Finish:	Paint finish as standard or to customer specification.
Voltage:	Exd 24V a.c./d.c. Exia 28V.
Rating:	2 amp.
Switches	2 pole c/o, wired to terminals. Optional up to 4 pole (UL version 2 pole only).
Optional Indicator:	A red high intensity LED can be fitted for alarm indication.
Certified Temp:	Exd* -55°C to +70°C. Exi* -55°C to +60°C. -20°C to +55°C (LED version only). UL -40°C to +70°C, -20°C to +55°C (LED version only). CSA -50°C to +55°C (Exd), -50°C to +40°C (Exi). *Note: includes ATEX, IECEx, CUTR, Brazilian & Chinese versions.
Weight:	3-8 kg. steel (approx.) or 2.5 kg. alloy (approx.).
Ingress Protection:	IP66 and IP67. SM87 PB IP68 (35m for 40 hours).
Entries:	Up to 4 x M20 or M25 ISO Ex d/Ex ia. Up to 4 x 1/2" or 3/4" NPT UL.
Terminals:	Will accept up to 1.5mm ² cable.
Resistor Values:	470R minimum (d.c. & I.S. units only).



Both the Exia units and the Exd units have the same external appearance. Also the internal components are identical throughout the range. Each unit can be wired for either NO, NC or CO contacts to customer specification.

Ordering Requirements

The following code is designed to help in selection of the correct unit. Build up the reference number by inserting the code for each component into the appropriate box.

Unit SM87	Model []	Material []	Certification []	Entries []	Duty Label []	Tag Label []	Options []	Finish []			
*Model Code Breakglass Latching BGL Lift Flap Breakglass Latching LBGL Push Button Latching key reset PBL Push Button Only PBM Momentary Action		Certification Code Ex ia I Ex d D IECEx Ex i IJ IECEx Ex d DJ UL UL ULC UC CSA - Ex i IC CSA - Ex d DC CUTR Ex i IG CUTR Ex d DG Chinese Ex i IQ† Chinese Ex d DQ† Inmetro Ex i IM Inmetro Ex d DM		Entries Code M20 1 M25 2 1/2" NPT 3 3/4" NPT 4 Other 5 Position Top *T Bottom *B RHS *R LHS *L		Duty Label Code Fire-Breakglass 1 Push Button 2 Fire-Push Button 3 ESDO-Abandon 4 Other O* None N		Options Code Not required N LED A Resistor Series G* Resistor EOL H* Diode D* 3 Pole T c/o Switch 4 Pole F c/o Switch		Finish Code Red R Blue B Yellow Y Yellow/ X Black Stripes Special S*	
* UL version only available in PBL model.				* Prefix position with size code i.e. 1T 1B = 20mm Top and Bottom.		* Please specify.		* Please specify.		* Please specify.	
*Material Code Stainless Steel S Alloy A		* Russian Fire Approval as standard. † Not suitable for use in China on fire alarm systems.				Label Code Required Y* Not Required N					
* UL version only available in Alloy.						* Please specify.					