

1

SPECTRA B450TDB

Traffic Light Static Twin E14 Beacon
Twin E14 Filament bulbs
IP Rating: IP65
Temp: -25°C to +50°C
Unit weight: 395g
CE

Order code Voltage
B450TDB250B/x 12-250V DC/AC

Multi-unit connection possible using
connector supplied
B450 and B350 units are interconnectable

B450TDB unit is supplied without a bulb.
Please order the correct voltage and
wattage.

Dimensions : Ø140 x 177mm
1.5mm² terminals
Cable entry: 1 x 5-7mm push through
grommet
2 x M20 cable entry (IP65)

x = Lens colour
R = Red A = Amber
B = Blue C = Clear
G = Green Y = Yellow

Bulbs E14	
E2S Part No.	Version
BR261215E	24V 15W 1.25A
BR262415E	24V 15W 625mA
BR264815E	24V 15W 312mA
BR2613015E	115V 15W 130mA
BR2623515E	230V 15W 65mA

Tel : +44 (0)20 8743 8880 Fax : +44 (0)20 8740 4200
mail : sales@e2s.com web : www.e2s.com



2



ATTENTION: Installation must be carried out by an electrician in compliance with the latest codes and regulations.



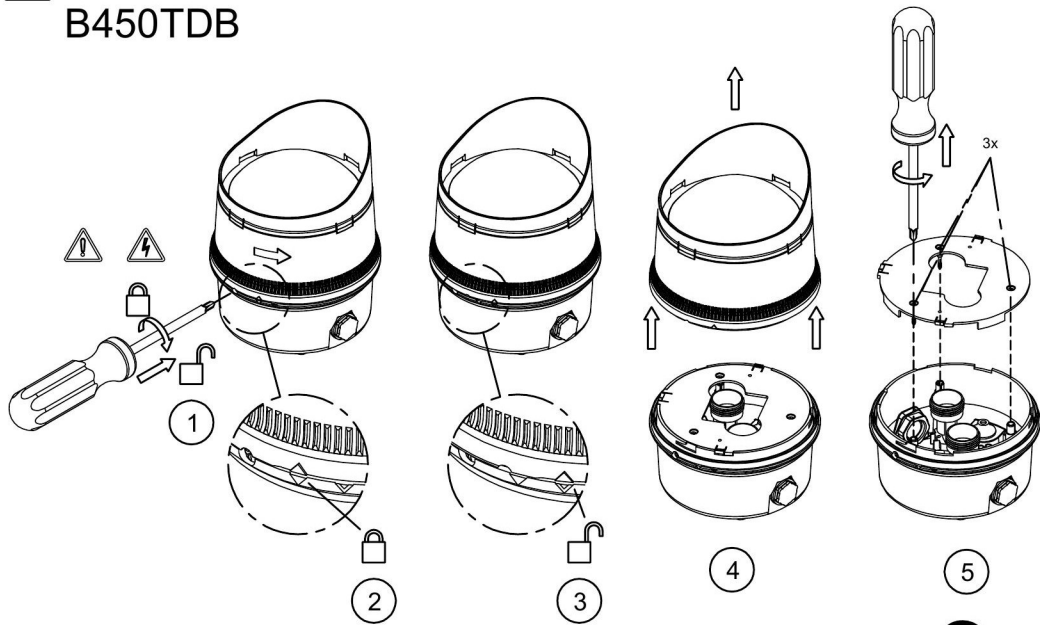
ATTENTION: Disconnect from power source before installation or service to prevent electric shock.



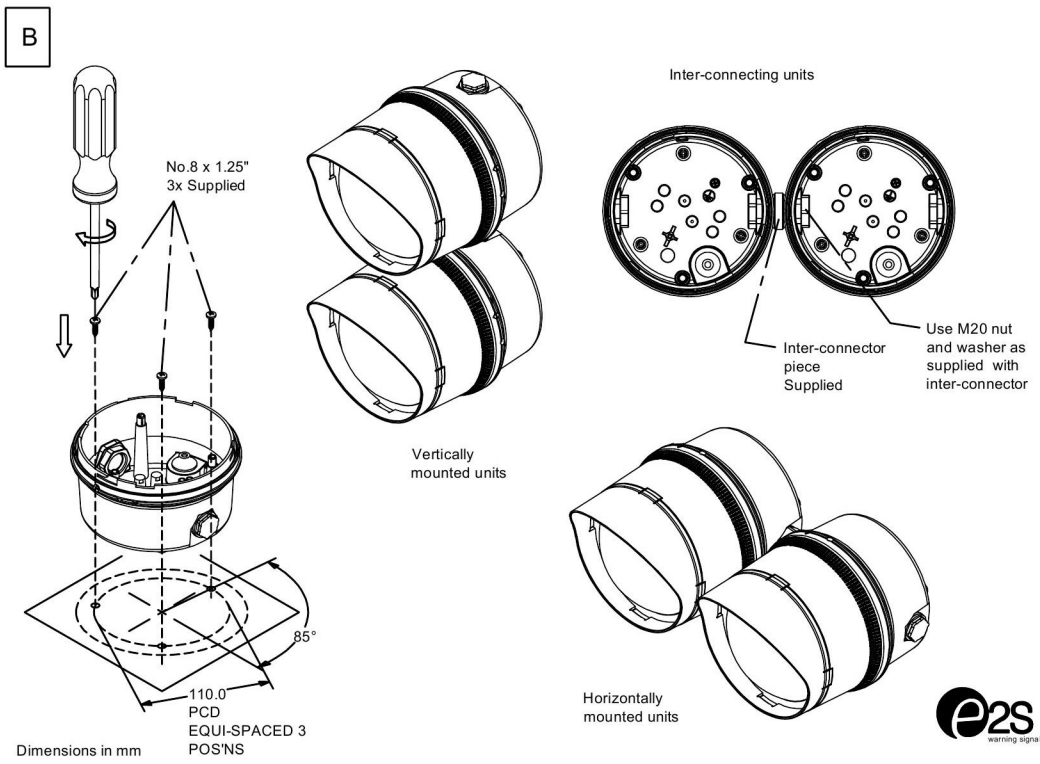
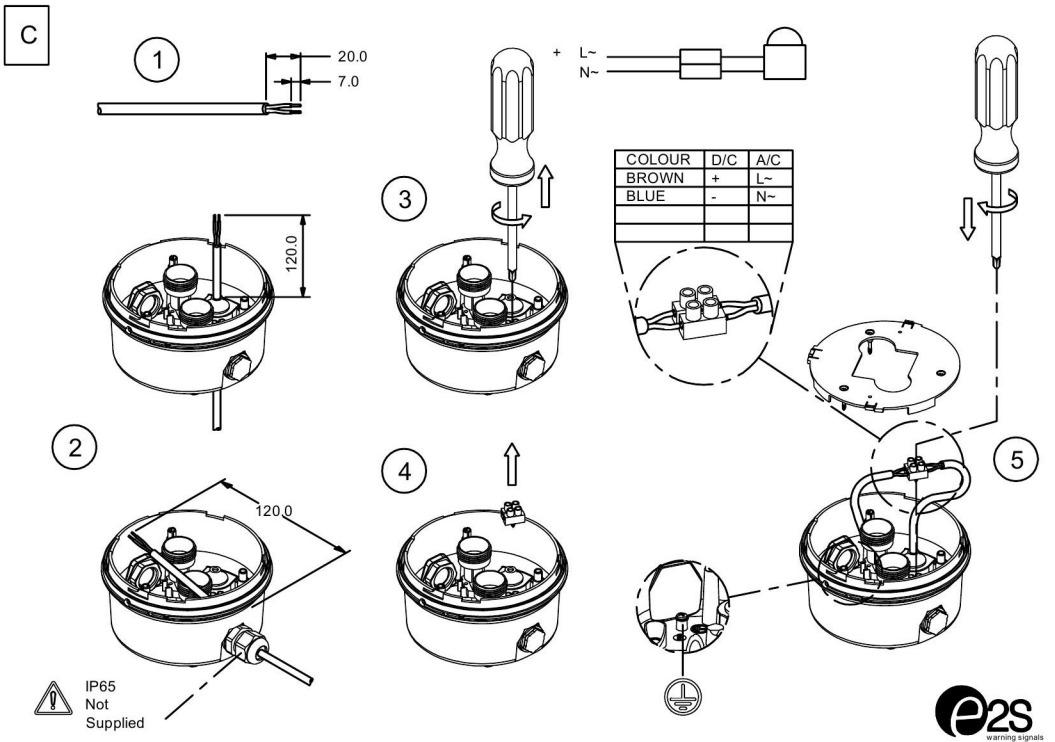
ATTENTION: Lens on unit will be hot allow to cool prior to removal.



A SPECTRA B450TDB



Tel: +44 (0)20 8743 8880 Fax: +44 (0)2 8740 4200
mail: sales@e2s.com web: www.e2s.com



Dimensions in mm

